



## Fixed Mobility Double Deep Pallet Rack For Long Lasting Warehouse Storage Solution

### Basic Information

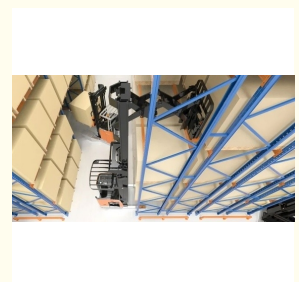
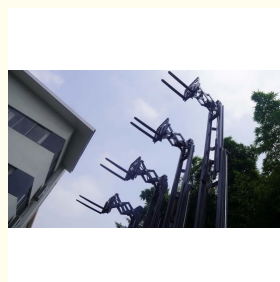
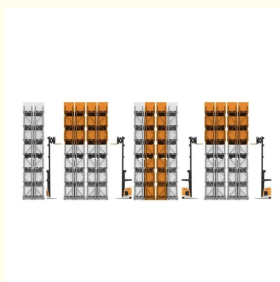


### Product Specification

- Model NO.: QF-Double Deep Racking
- Material: Steel
- Structure: Rack
- Type: Pallet Racking
- Mobility: Fixed
- Height: 5-15m
- Weight: 2000
- Closed: Open
- Development: New Type
- Serviceability: Common Use
- Color: Customized
- Lead Time: 25 Days
- Raw Material: Q235
- Surface Treatment: Powder Coating
- Transport Package: Standard Export Packing



### More Images



Our Product Introduction

for more products please visit us on [warehouse-rackings.com](http://warehouse-rackings.com)

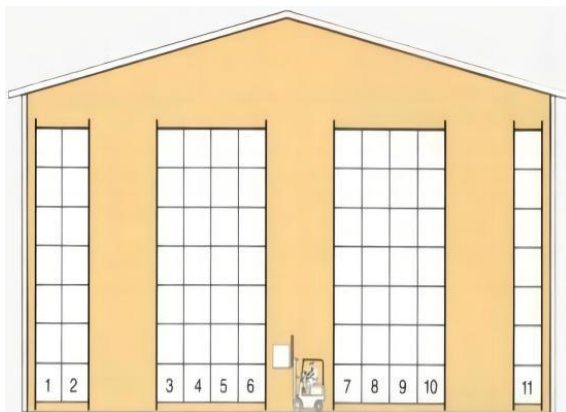
## Product Description

### Fixed Mobility QF-Double Deep Racking For Long Lasting Warehouse Storage Solution

#### Product Description

#### QiFei Double Deep Pallet Rack:

By placing the second row of selective pallet racking immediately behind the first row, a double-deep pallet racking is created, which eliminates the aisle between the two storage racks. This can add up to 25%. Double deep pallet racking systems require deep distance lift trucks.



Style	Warehouse Storage Pallet Rack
Dimension	Standard Pallet:1200*800 / 1200*1000 / 1100*1100 / 1066*1220 Depth:1000MM / 900MM / 1020MM Width: 2700MM / 2300MM / 2500MM / 2432MM Height::pitch is adjusted by increments of 75mm Customized Pallet:contact us directly
Upright	80*60; 90*60; 90*70; 90*75; 100*67; 100*70; 100*75; 120*75; 120*87mm, Thickness:1.5~3.0mm
Beam	Height:80~160mm; Width:45mm/50mm; Thickness:1.5~2.5mm
Material	Q235B
OEM&ODM	Available
Surface Treatment	Galvanized/Powder Coating
Color	Customized
General Use	Warehouse Shelving/Rack, etc.

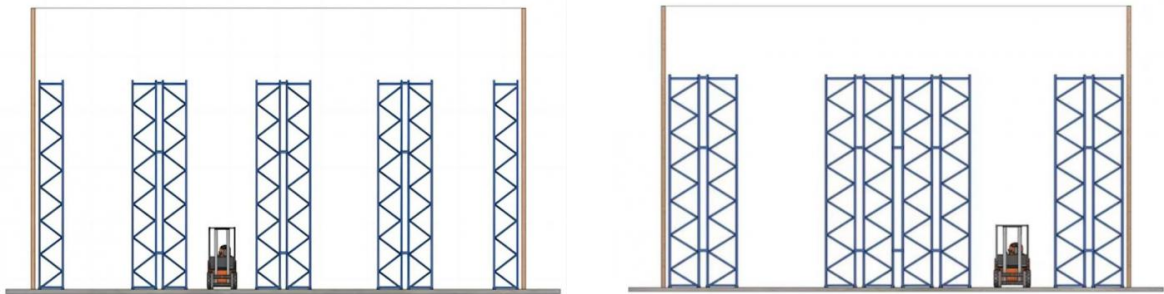
#### How does it work

**Double deep pallet racking** systems increase the available storage space, by simply storing the pallets at two depths instead of one as with the selective or adjustable pallet racking (APR) system.

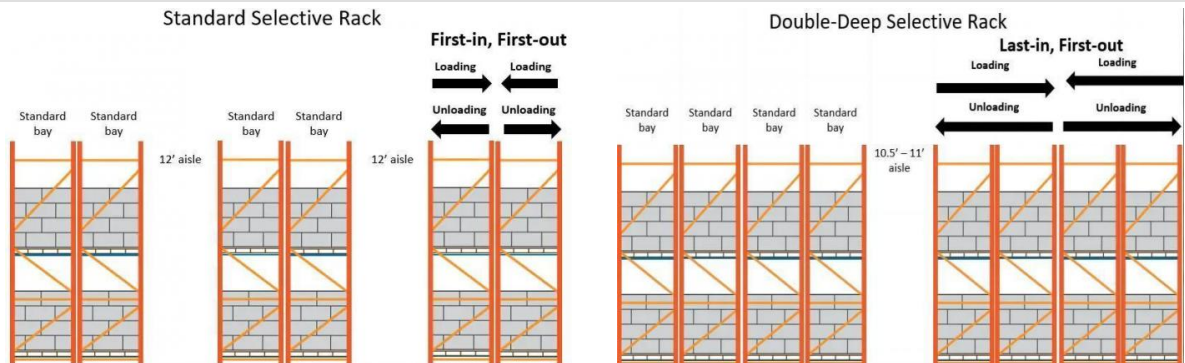
The **2 pallets are accessed from the same aisle**, reducing the number of aisles by half compared to the selective pallet racking system.

In short, double deep pallet racking increases warehouse storage density by **reducing aisles and increasing storage locations**.

As **direct access is only available for front unit loads**, this double deep system for **managing LIFO (Last in, First out) stock** is recommended for storing identical or high rotation products, with more than one pallet per reference.



## Advantages



**Increase in storage capacity** compared to selective pallet racking.

**Access to the pallets continues to be simple and relatively quick**, maintaining 50% immediate accessibility and reasonable rotation of goods.

System with a **good use of all the available locations**, generally above 80-90%.

Intermediate system between an adjustable or selective racking system and a high-density compact system.

**LIFO (Last in, First out) system**, where the last pallet deposited on the racking will be the first one to leave.

**More efficient system, which eliminates unnecessary aisles and increases the use of available space.**

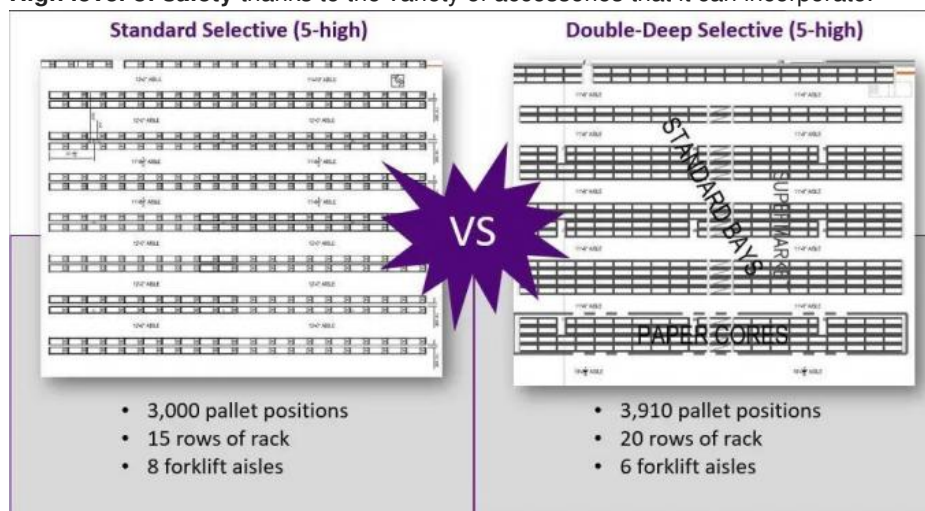
Double deep pallet racking systems **adapt to any type of unit load**.

As with selective pallet racking systems, **the assembly and disassembly process and replacement of components is quick and simple.**

**Saves time and effort** in the handling of unit loads, generating fast stock rotation.

**The design** of double deep pallet racking **enables its reconfiguration or extension according to the storage needs that arise.**

**High level of safety** thanks to the variety of accessories that it can incorporate.



## Standard Selective Rack Layout

vs

## Double-Deep Rack Layout

The image shows a comparison of standard selective vs. double-deep selective in the same space.

Both systems are 5-levels high.

You see that the standard selective rack yields 3,000 pallet positions in 15 rows of rack with 8 forklift aisles.

The double-deep selective rack yields 3,910 pallet positions in 20 rows of rack with 6 forklift aisles.

Based on this, it may seem like double deep racking is advantageous over standard, since you'll **gain pallet positions**. But, this doesn't always mean it's the right fit. Keep in mind that making the switch to double-deep will **decrease the number of pick faces**, as evident in the number of aisles.

This becomes a factor if, for example, you only have one pallet of each SKU, then it doesn't make sense to



convert to double-deep. Why? If you have to retrieve a SKU that's placed behind a pallet of a different SKU, you'll have to move that first pallet in order to retrieve it, and therefore operational efficiency is lost. You don't want to have to move the tortilla chips to get to the potato chips.

But, if you have multiple pallets of the same SKU, would benefit from higher density, and are able to sacrifice some selectivity, then this may be right for you.



### **Do You Currently Have Standard Selective Rack But Want To Make A Switch To Double Deep Rack?**

If you currently have standard selective rack but feel that double-deep selective racking would be more beneficial to you, then you'll be happy to know that you are able to convert.

One thing to factor in when considering this conversion is that a standard forklift won't work with a double-deep rack system. It won't be able to reach the second pallet position. You'll need a double-reach or deep reach lift truck to load and unload pallets from this system.

If that's doable, then you'll want to go to a storage system integrator, like QIFEI. We can redo your layout to be double-deep. Moving forward with it will require unloading the products, dismantling the existing rack, reinstalling, and possibly adding on.

The majority of your existing selective pallet rack system will be utilized when converting to a double-deep racking system. This of course is dependent on the condition of your current rack.

We'd appreciate the opportunity to help you further, whether that be more information or a quote. Just get in touch with our representative.

Company Profile

### **Welcome to visit our company**

## **Jiangsu Qifei Intelligent Storage Equipment Co., Ltd**

Established in 2020, is one of the leading manufacturer specialized in industrial warehouse storage equipment

Main products are heavy/medium/light duty rack, cantilever rack, mezzanine floor, drive in rack, and so on.

We aim to provide cost-effective and space utilization storage solutions for all customers worldwide



## WHY CHOOSE US



Customization

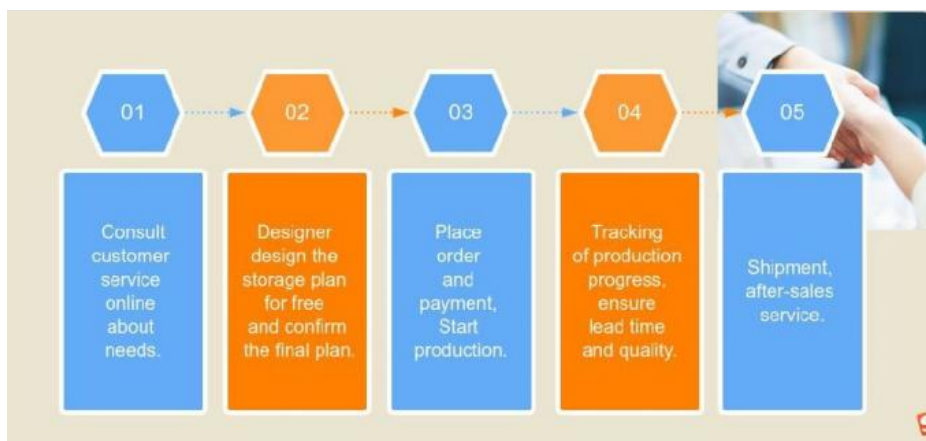


Free Design



Best Price

## Co-operation Process



## FAQ

Q: Are you manufacturer or trading company?

A: We are experienced manufacturer in the warehouse storage industry.

Q: How is your delivery time?

A: Generally, it is within 20 days against formal order and deposit. It also depends on other factors such as order quantity.

Q: What is the payment term?

A: T/T 30% as deposit, and 70% before delivery. We'll show you the photos of the products and packages before you pay the balance.

Q: What is your terms of delivery?

A: EXW, FOB

Q: Are samples available?

A: Yes, we can supply the sample if we have ready parts in stock, but the customers have to pay the sample cost and the courier cost.

Q: What is the minimum order quantity?

A: Generally, MOQ is 10sets.

Q: Can I make my own brand and designed products?

A: Yes, we do both OEM and ODM, so you can make your own product with your own logo.

Q: Where is your factory? Can I visit it?

A: Our factory located in Nanjing, Welcome to visit our factory. We can arrange pick-up from the airport or train station for you.

Q: What is the material being used for your products?

A: Mild steel Q235.

Q: I don't have drawing or picture available for the products, could you design it for me?

A: Yes, we can make the best suitable design for you but need to know more details.

Q: Do I get any guarantee from your company?

A: 3 years warranty

Q: How do you make our business long-term and good relationship?

A: Quality makes trust and reputation, plus competitive price to ensure our customers benefit ;



**Jiangsu Qifei Intelligent Storage Equipment Co., Ltd.**



+86-15161451461



sharonyan@qifeirack.com



warehouse-rackings.com

Add: #739 Dixiu Road Jiangning District Nanjing China