



## Long Span Medium Duty Shelving Adjustable Metal Shelves of Q235 for Warehouse Storage

### Our Product Introduction

for more products please visit us on [warehouse-rackings.com](http://warehouse-rackings.com)

#### Basic Information

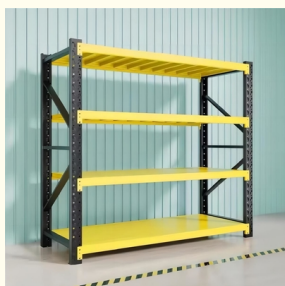


#### Product Specification

- Model NO.: QF-Medium Duty
- Material: Steel
- Structure: Rack
- Type: Pallet Racking
- Mobility: Adjustable
- Height: 0-5m
- Weight: 200
- Closed: Open
- Development: Conventional
- Serviceability: Common Use
- Color: Customized
- Lead Time: 15 Days
- Raw Material: Q235
- Surface Treatment: Powder Coating
- Transport Package: Safe



#### More Images



## Product Description



Jiangsu Qifei Intelligent Storage Equipment Co., Ltd.



**Medium Duty Rack** adopts special step beams, which has the characteristics of simple structure, light weight, strong bearing capacity and low cost. The frame is connected by two uprights, horizontal braces and diagonal braces. It can be adjusted freely up and down to meet variety of storage needs. Medium duty racking is widely applied in electronics, food and medicine, clothing and office, business and other industries.

Parameter	Value
Shelf Brand	QiFei
Product Name	Medium-Duty Warehouse Shelf
Shelf Thickness	0.35mm
Product Color	Orange,Gray,White,Blue,Black,or customized
Upright Specification	50*35*0.5mm
Number of Shelves	4 layers or customized
Product Dimension	2000*600*2000 mm
Manufacturing Process	Uprights/Crossbars/Shelves: Cold-rolled



### Required info for quote

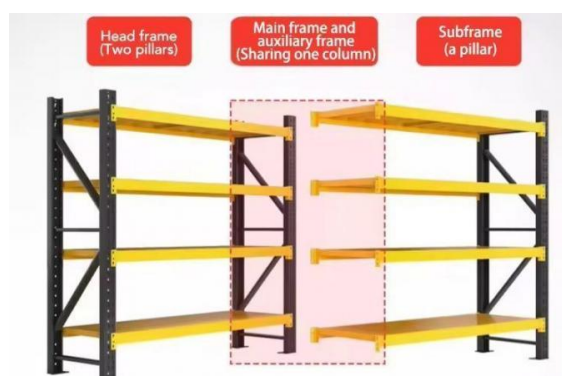
- 1、The AUTOCAD drawing of warehouse or racking
- 2、Length, Height, and Width of the warehouse
- 3、Layers of the racking
- 4、Pallet size
- 5、Max weight of pallet with cargo on
- 6、Color requirement

Load Capacity	Sizes(L*W*H)mm	Specification
100kgs/layer	1200*400*2000	Frame: 30*50*0.6mm Beam: 30*50*0.4mm
	1200*500*2000	
	1500*400*2000	
	1500*500*2000	
	2000*400*2000	
200kgs/layer	2000*500*2000	Frame:40*80*0.7mm Beam:40*60*0.6mm
	1500*500*2000	
	1500*600*2000	
	2000*500*2000	
300kgs/layer	<b>2000*600*2000</b>	Frame:40*80*0.7mm Beam:40*60*0.7mm
	1200*600*2000	
	1500*500*2000	
	1500*600*2000	
	2000*500*2000	
	2000*600*2000	

### Detailed Photos

### MAIN AND SUB FRAME SAVES COST SAVE SPACE

The main frame has two columns frames, which can be used independently, Add on rack cannot be used alone, which must be used with the main rack.



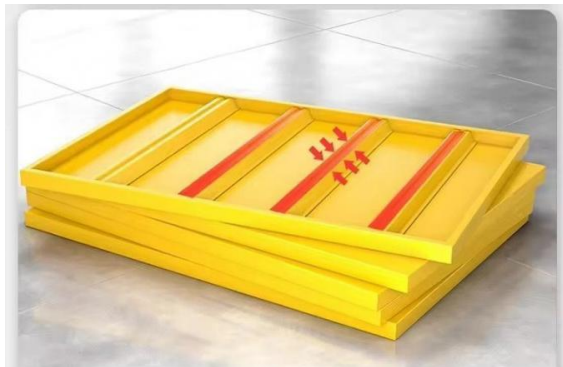


## ONE THREE-MINUTE INSTALLATION

Screw bags, toolkits, none of that is needed  
 Butterfly buckle design card slot smooth a card a buckle  
 three minutes to become an assembly master

## CONVENIENT STORAGE ADJUSTABLE HEIGHT

Can be freely adjusted according to the needs of the layer height size  
 items can be placed



## SHELVING BOARD REINFORCEMENT RIBS

The spot-welded reinforcing ribs at the bottom of the shelf board  
 increase the focus of the laminate and prevent the shelf board being  
 deformed and make it much stronger.

## TRAPEZOIDAL SUPPORT

Diagonal bracing is added to the shelf, which conforms to the  
 mechanical theorem and ensures stable load-bearing.





## WIDEN THE WELD FILM

Widen the welding film to increase the contact area between the shelf and the floor. More stable and less wobbly.



## Packaging & Shipping

### Packaging



### Shipping

	<p><b>EXPRESS</b></p> <p>Express door to door is the most convenient one. 5-7 days will arrive</p> <p><b>EMS</b> <b>FedEx</b> <b>UPS</b> <b>DHL</b></p>	
<p>MOT AS YOUR REQUEST</p>	<p><b>AIR FREIGHT FOR URGENT</b> Transit time: 5-7 days</p>	<p><b>OCEAN SHIPPING NORMALLY</b> Transit time: 15-40 days</p>

## Company Profile



**Jiangsu Qifei Intelligent Storage Equipment Co., Ltd.**, established in 2020, is one of the leading manufacturer which specialized in designing & manufacturing industrial warehouse storage racks, automation warehouse system and professional logistics equipment, we aim to provide cost-effective and space utilization storage solutions for all customers worldwide . We have powerful R&D teams,including 8 experienced design engineers.

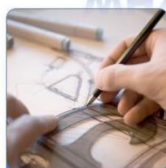
Qifei's workshop equipped with 6 automatic production lines of rolling and curved steel and two static powder coating lines, which ensures the high quality of our products. All our products and operation are ISO:9001 certified , and all our racks / shelving are approved by SGS company .

Our main products are heavy duty rack, medium duty rack, light duty rack, cantilever rack, mezzanine floor, drive in rack, and so on.

**Welcome to visit our company.**



## WHY CHOOSE US



**Customization**



**Free Design**



**Best Price**



**Drawing**

Customize as your DWG



**No Drawing**

Contact us about requests



**DWG Confirm**

Confirm details



**Quotation**

Confirm lead time&MOT



**Order & Deposit**

Start production



**Pack & Shipping**

Delivered to door

## FAQ

**Q:** Are you manufacturer or trading company?

**A:** We are experienced manufacturer in the warehouse storage industry.

**Q:** How is your delivery time?

**A:** Generally, it is within 25 days against formal order and deposit. It also depends on other factors such as order quantity.

**Q:** What is the payment term?

**A:** T/T 30% as deposit, and 70% before delivery. We'll show you the photos of the products and packages before you pay the balance.

**Q:** What is your terms of delivery?

**A:** EXW, FOB

**Q:** Are samples available?

**A:** Yes, We can supply the sample if we have ready parts in stock, but the customers have to pay the sample cost and the courier cost.

**Q:** What is the minimum order quantity?

**A:** Generally, MOQ is 10sets.

**Q:** Can I make my own brand and designed products?

**A:** Yes, we do both OEM and ODM, so you can make your own product with your own logo.

Q: Where is your factory? Can I visit it?

A: Our factory located in Nanjing, Welcome to visit our factory. We can arrange pick-up from the airport or train station for you.

Q: What parameters do I need to provide for an accurate quotation?

- 1) Quantity(set)
- 2) Size: Length\*Width\*Height (mm) or samples or technical drawings
- 3) Load capacity per layer(kg)
- 4) Number of layers

Q: I don't have drawing or picture available for the products, could you design it for me?

A: Yes, we can make the best suitable design for you but need to know more details.

Q: Do I get any guarantee from your company?

A: 3~10 years warranty

Q: How do you make our business long-term and good relationship?

A: Quality makes trust and reputation, plus competitive price to ensure our customers benefit ;



**Jiangsu Qifei Intelligent Storage Equipment Co., Ltd.**



+86-15161451461



sharonyan@qifeirack.com



warehouse-rackings.com

Add: #739 Dixiu Road Jiangning District Nanjing China